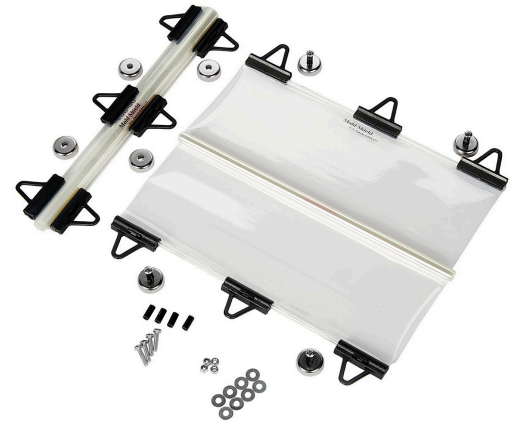


Moldshield™

PCS Company's Moldshields™ confines molded parts to desired drop zone, reducing scrap rate from floor contamination, and lost or damaged parts. Moldshields™ clear plastic curtain allows you to observe your molding area, and monitor your parts in production. PCS Moldshields™ are easily attached and removed with supplied magnets and hardware, for quick access to the mold, mold changes, or equipment maintenance. Mold shields attach to either side of the mold using magnets. As the mold opens and closes, the mold shield will automatically expand and retract preventing molded parts from falling outside the drop zone. Each kit contains two Moldshield™ mold side curtains, mounting hardware, and high strength magnets. For larger applications, multiple Moldshields™ can be used for a mold. Maximum operating temp to 250°F. Standard lengths from 8" up to 47".



Features:

- Eliminates Part Contamination
- Reduces Scrap
- Sold in pairs with mounting hardware
- Quick & Easy installation with magnetic mounting (2 separate)
- Heavy gauge chemical resistant film
- Maximum operating temperature 250°F

| Item Number | Description | Height | Width | Number of Shields | Number of Magnets |
|-------------|-----------------|--------|-------|-------------------|-------------------|
| MCUR0824 | Moldshield™ kit | 8" | 24" | 2 | 8 |
| MCUR1224 | Moldshield™ kit | 12" | 24" | 2 | 8 |
| MCUR1624 | Moldshield™ kit | 16" | 24" | 2 | 8 |
| MCUR2024 | Moldshield™ kit | 20" | 24" | 2 | 8 |
| MCUR2424 | Moldshield™ kit | 24" | 24" | 2 | 8 |
| MCUR3224 | Moldshield™ kit | 32" | 24" | 2 | 8 |
| MCUR4024 | Moldshield™ kit | 40" | 24" | 2 | 8 |
| MCUR4724 | Moldshield™ kit | 47" | 24" | 2 | 8 |